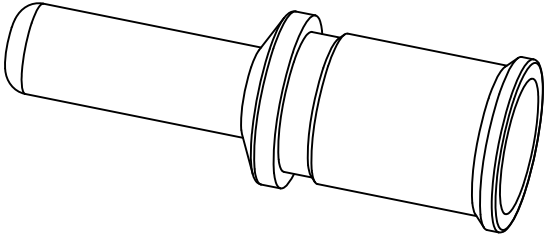
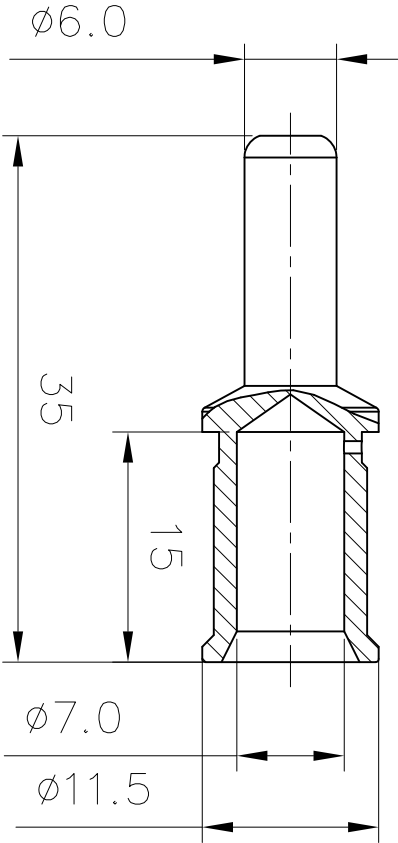


Crimp contacts

- 01. Material :Copper alloy
- 02. Surface :Silver plated
- 03. Contact resistance : $\leq 1m\Omega$
- 04. Terminal :Crimp connection
- 05. Wire gauge :25mm²/AWG 4
- 06. Rohs Compliance
- 07. General tolerances: DIN ISO 2768-c



REV	ECN	DESCRIPTION	DRAFT	DATE

		MATERIAL:	/	SURFACE/COLOR:	/
APPD:	Song ZG 2023.04.23	MAT NO/REV:	D0	MAT STATUS:	/
CHKD:	Yang SH 2023.04.23	NAME:	70A-SM-25		
DRAFT:	Chen HK 2023.04.23	DRAWING NO.	/	TYPE : CUSTOMER DRAWING	DRAWING STATUS /
A4 (mm)		SCALE	2:1	SHEET	1/1