

Transfer or duplication of this document as well as the utilization or communication of its contents are prohibited unless explicit authorization is granted. Violations will be liable for compensation. All rights reserved for patent, utility model or designs registrations. 除专利、商标、实用新型、外观设计、发明专利、软件著作权、集成电路布图设计专有权、商业秘密等权利外，本公司保留其他所有权利。

FOR-1755 Rev.2.2

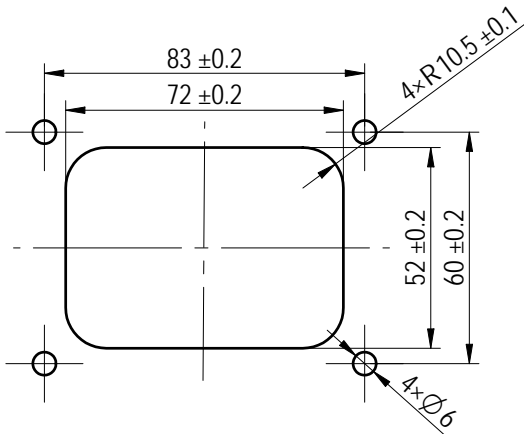
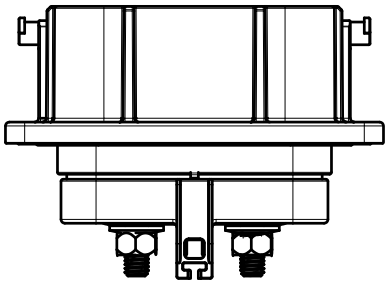
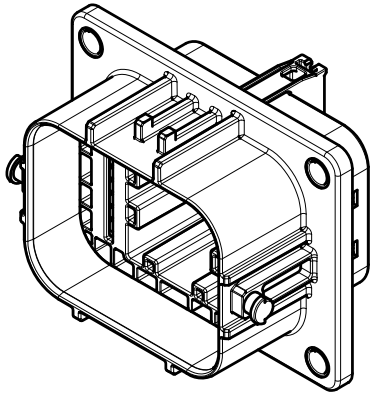
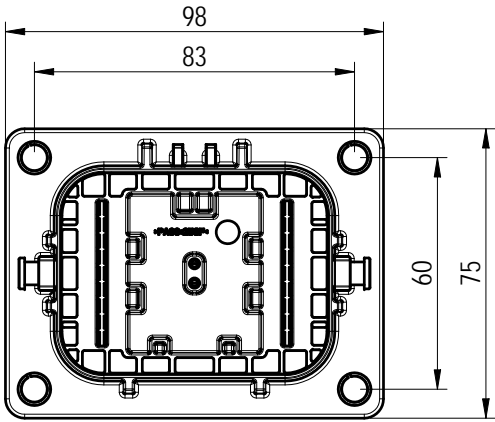
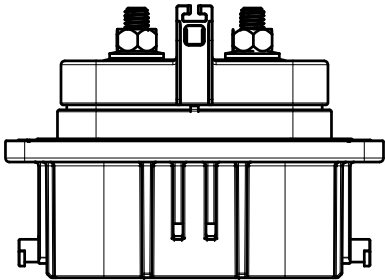
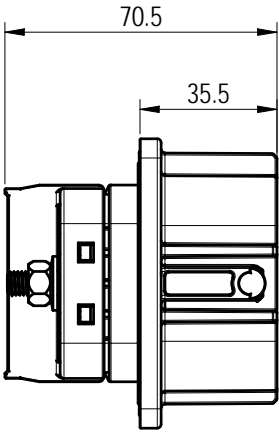
2

3

4





5

6



客户安装开孔尺寸

00					
REV	ECN	DESCRIPTION	DRFT	DATE	

			MATERIAL:		General tolerances(mm):ISO 2768-mK		
			MAT NO./REV: 28010000479-1 / 00		MAT STATUS: work		
APPD:			NAME				
CHKD:			FMSD-S01-F-BL000				
DRFT:			DRAWING NO.	TYPE	DRAWING STATUS	SCALE	SHEET
  A4 			200334645		work	1:2	1/2