

Transfer or duplication of this document as well as the utilization or communication of its contents are prohibited unless explicit authorization is granted. Violations will be liable for compensation. All rights reserved for patent, utility model or designs registrations. 除非给予明确授权，否则禁止转让、复制、利用、交寄本文档的内容。侵犯者将承担赔偿责任。 本公司保留对涉及发明、实用新型和外观设计的所有权利。

FOR-1754 Rev.1.2

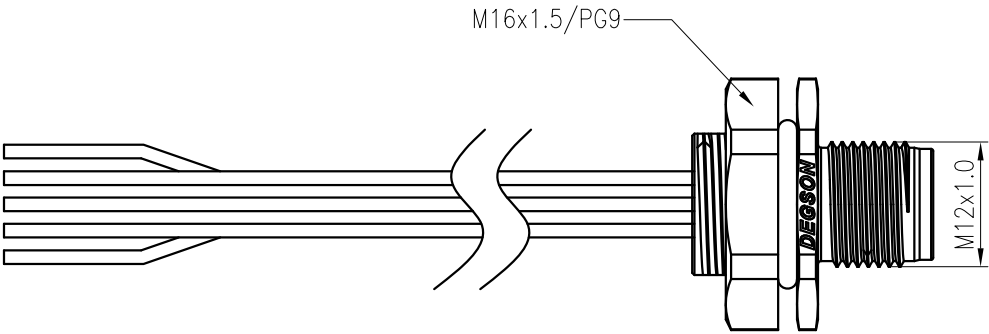
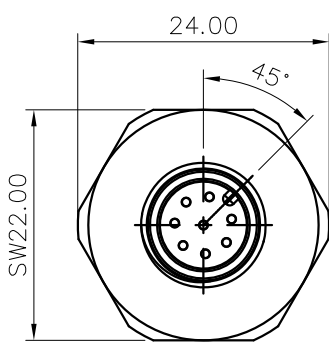
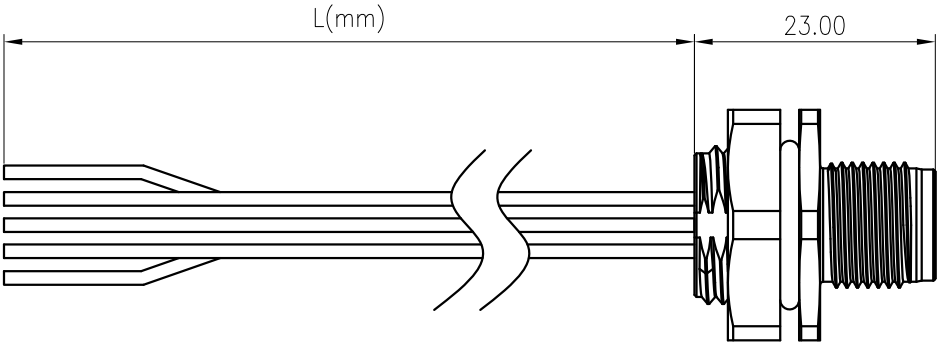
2

3

4

5

6



SD-M12X-XXP-MM-SH8XXX-00A(H)

Coding:A,B,D

Pinnumber:03,04,05,
06,08,10,12

Thread specification:

D:PG9;



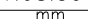
E:M16*1.5

XX:150~1500mm
15:150±15mm
30:300±20mm
50:500±20mm
A0:1000±40mm
A5:1500±40mm
B0:2000±50mm
C0:3000±60mm

Dimensional tolerance(mm)					Length tolerance(mm)					0.10/10 ±2°
0	>30	>60	>100	>150	0	50	150	300	>1000	
~30	~60	~100	~150	~150	~50	~150	~300	~1000	~36	
±0.25	±0.35	±0.55	±0.80	±1.10	±6	±11	±16	±26	±36	

额定电压/Rated Voltage	3/4PIN	5PIN	6/8/10/12PIN
	250V	60V	30V
额定电流/Rated Current	3/4/5PIN	6/8PIN	10/12PIN
	4A	2A	1.5A
耐电压/Withstanding voltage	3/4PIN	5PIN	6/8/10/12PIN
	AC1500V/1Min	AC1120V/1Min	AC500V/1Min
使用温度范围/Operating temperature(°C)	-25~+80		
防水等级/Levels of protection	IPX8		
接线方式/Terminal	soldering		
线缆标准/Wire specifications	3/4/5PIN	6/8PIN	10/12PIN
	UL1061 22AWG	UL1061 24AWG	UL1061 26AWG
锁板厚度/For Panel Thickness Max(mm)	3.0		
符合RoHS环保要求/Conform to RoHS	Yes		

3pin A Coding		4pin A Coding		5pin A Coding	
Pin Assignments Front View		Pin Assignments Front View		Pin Assignments Front View	
				5	Grey
4	Black	4	Black	4	Black
3	Blue	3	Blue	3	Blue
		2	White	2	White
1	Brown	1	Brown	1	Brown
Pin	Wire Color	Pin	Wire Color	Pin	Wire Color
Pin Out		Pin Out		Pin Out	

MATERIAL:				SURFACE:				
MAT NO.:		<div> 宁波高松电子有限公司 NINGBO DEGSON ELECTRICAL CO., LTD</div>						
STATUS: /								
APPD:		NAME:						
CHKD:		SD-M12X-XXP-MM-SH8XXX-00A(H)						
DRFT: XU XY 2021.08.30				DRAWING NO.:			REV	00
	SIZE: A4		TYPE: CUSTOMER DRAWING			SCALE: 1:1	SHEET	1/2

REV	ECN	DESCRIPTION	DRFT	DATE
-----	-----	-------------	------	------

1

2

3

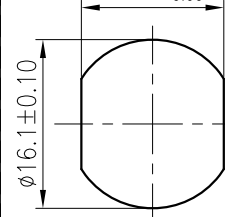
4

5

6

Thread specification:

M16*1.5

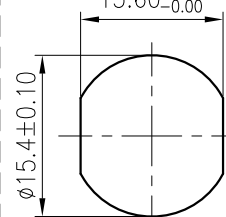
 $13.60^{+0.10}_{-0.00}$ 

Panel Mounted

1

Thread specification:

PG9

 $13.60^{+0.10}_{-0.00}$ 

Panel Mounted

2

6pin A Coding		8pin A Coding		4pin D Coding		5pin B Coding		10pin A Coding		12pin A Coding	
Pin Assignments Front View		Pin Assignments Front View		Pin Assignments Front View		Pin Assignments Front View		Pin Assignments Front View		Pin Assignments Front View	
										12	Red/Blue
										11	Grey/Pink
								10	Violet	10	Violet
								9	Red	9	Red
								8	Grey	8	Grey
								7	Black	7	Black
								6	Yellow	6	Yellow
								5	Pink	5	Pink
								4	Green	4	Green
								3	White	3	White
								2	Blue	2	Blue
								1	Brown	1	Brown
7	Blue	8	Red								
6	Pink	7	Blue								
		6	Pink								
		5	Grey								
4	Yellow	4	Yellow	4	Black	5	Grey	5	Pink	5	Pink
3	Green	3	Green	3	Blue	4	Black	4	Green	4	Green
2	Brown	2	Brown	2	White	3	Blue	3	White	3	White
1	White	1	White	1	Brown	2	White	2	Blue	2	Blue
Pin	Wire Color	Pin	Wire Color	Pin	Wire Color	Pin	Wire Color	Pin	Wire Color	Pin	Wire Color
Pin Out		Pin Out		Pin Out		Pin Out		Pin Out		Pin Out	

MATERIAL:

SURFACE:

MAT NO.:

STATUS:

APPD:

CHKD:

DRFT: XU XY 2021.08.30

SIZE: A4

 $\frac{\text{mm}}{\text{(inch)}}$

NAME:

DRAWING NO.:

TYPE: CUSTOMER DRAWING

SCALE: 1:1

SHEET

2/2

宁波高松电子有限公司
NINGBO DEGSON ELECTRICAL CO., LTD

SD-M12X-XXP-MM-SH8XXX-00A(H)

REV

00

REV

ECN

DESCRIPTION

DRFT

DATE

4

5

6